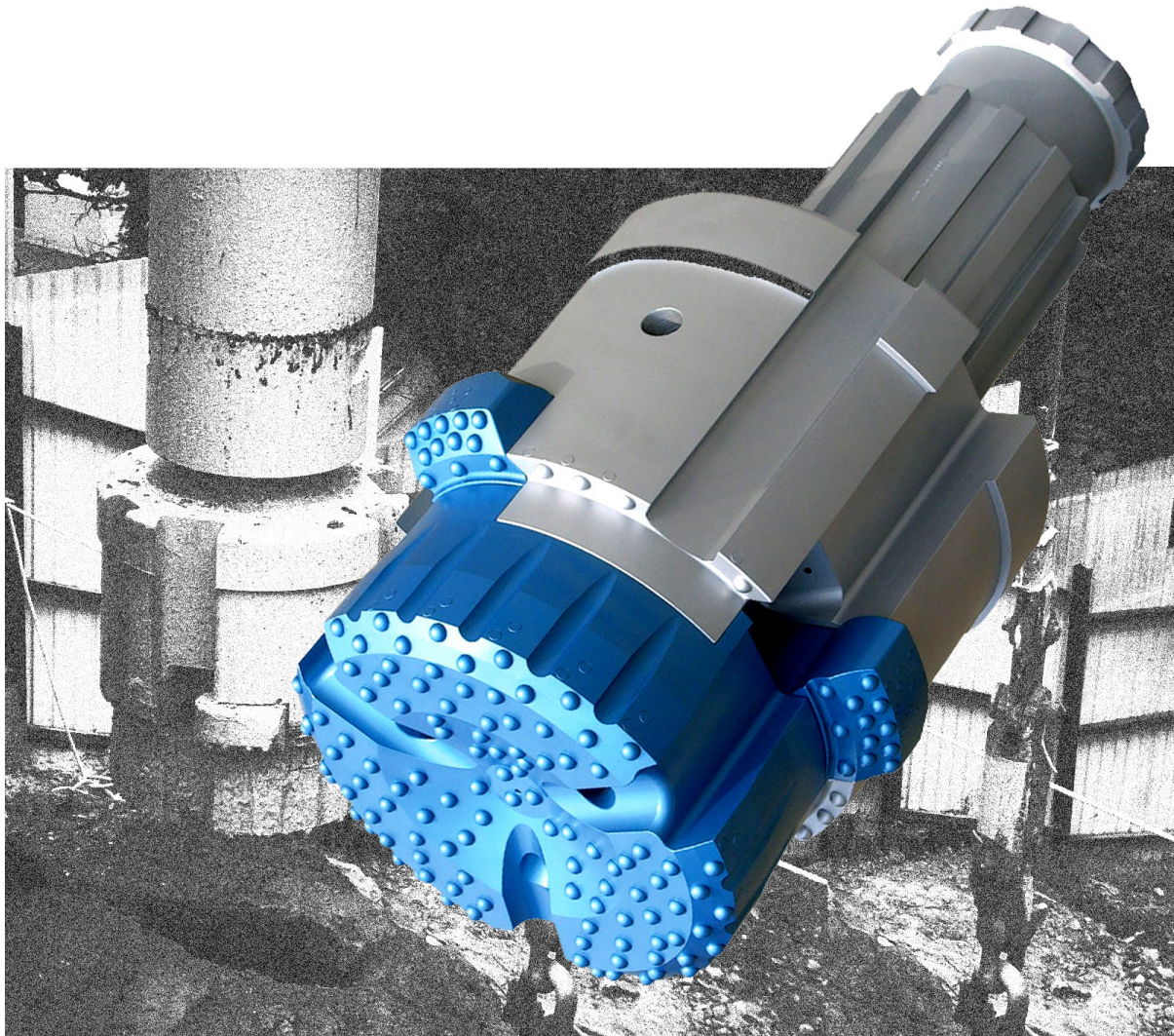


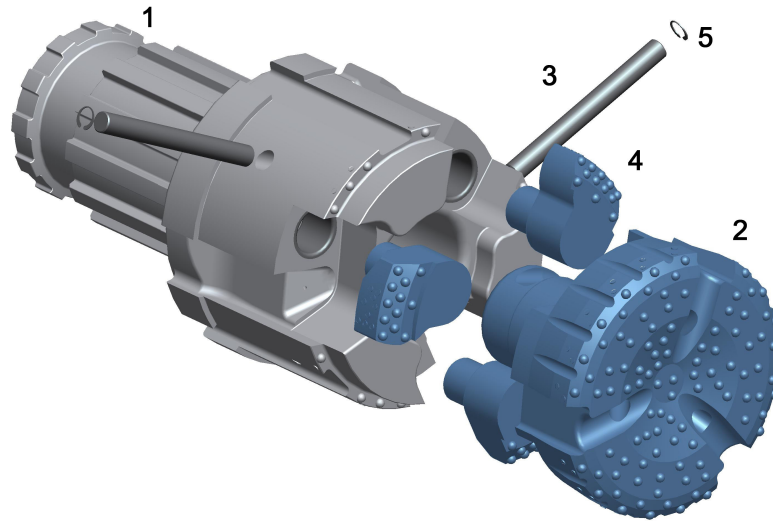
# PITUMEC

## THE PCON 510 CONCENTRIC UNDERREAMING SYSTEM



**CASING SIZE 559MM OD X 533MM ID DRILLING DIA. 580MM**

# PNEUMEC PCON 510 CONCENTRIC UNDERREAMING SYSTEM



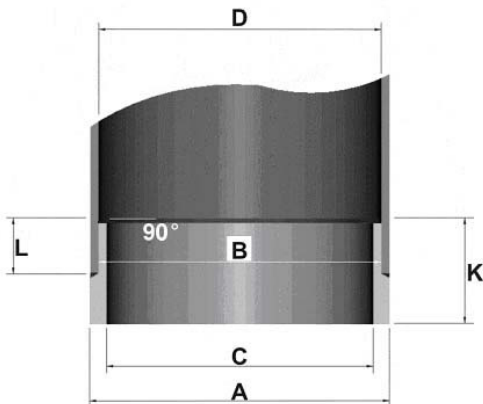
## PCON 510 PARTS LIST

|    |                         |              |
|----|-------------------------|--------------|
| 1. | GUIDE DEVICE N180 SHANK | UGD510N18PCN |
| 2. | PILOT BIT               | UPB510PCN    |
| 3. | LOCKING PIN (2)         | USP51050PCN  |
| 4. | REAMER (3)              | UBS510PCN    |
| 5. | CIRCLIP (2)             | USP51053PCN  |
| 6. | COMPLETE SYSTEM         | UCS510N18PCN |

## PCON 510 SPECIFICATIONS

|                     |        |                 |                     |
|---------------------|--------|-----------------|---------------------|
| UPPER BODY DIAMETER | 527MM  | CLOSED DIAMETER | 509MM               |
| REAMING DIAMETER    | 580MM  | CASING SIZE     | 559MM OD X 533MM ID |
| SYSTEM LENGTH       | 1180MM | SYSTEM WEIGHT   | 1300KG              |

## PCON 510 CASING SHOES



|        |         |
|--------|---------|
| DIA. A | 560MM   |
| DIA. B | 532.4MM |
| DIA. C | 511.8MM |
| DIA. D | 533.4MM |
| L      | 105MM   |
| K      | 195MM   |

# PNEUMEC

**PNEUMEC COMPANY LIMITED**

1st Floor, Tin On Sing Comm. Bldg., 41-43 Graham St. Central, H.K.

Tel : (852) 2180 9922

Fax : (852) 2180 9982

Website : [www.pneumec.com](http://www.pneumec.com)

email : [info@pneumec.com](mailto:info@pneumec.com)